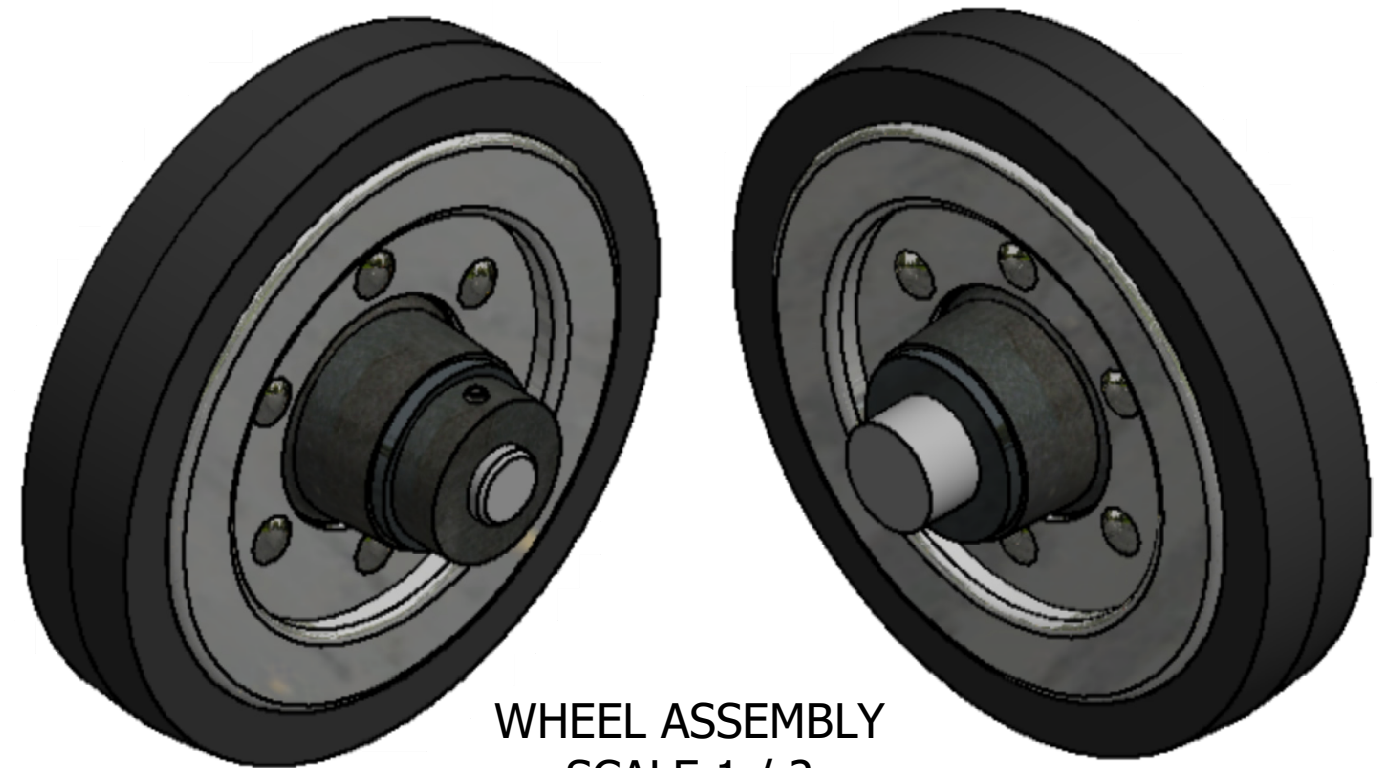
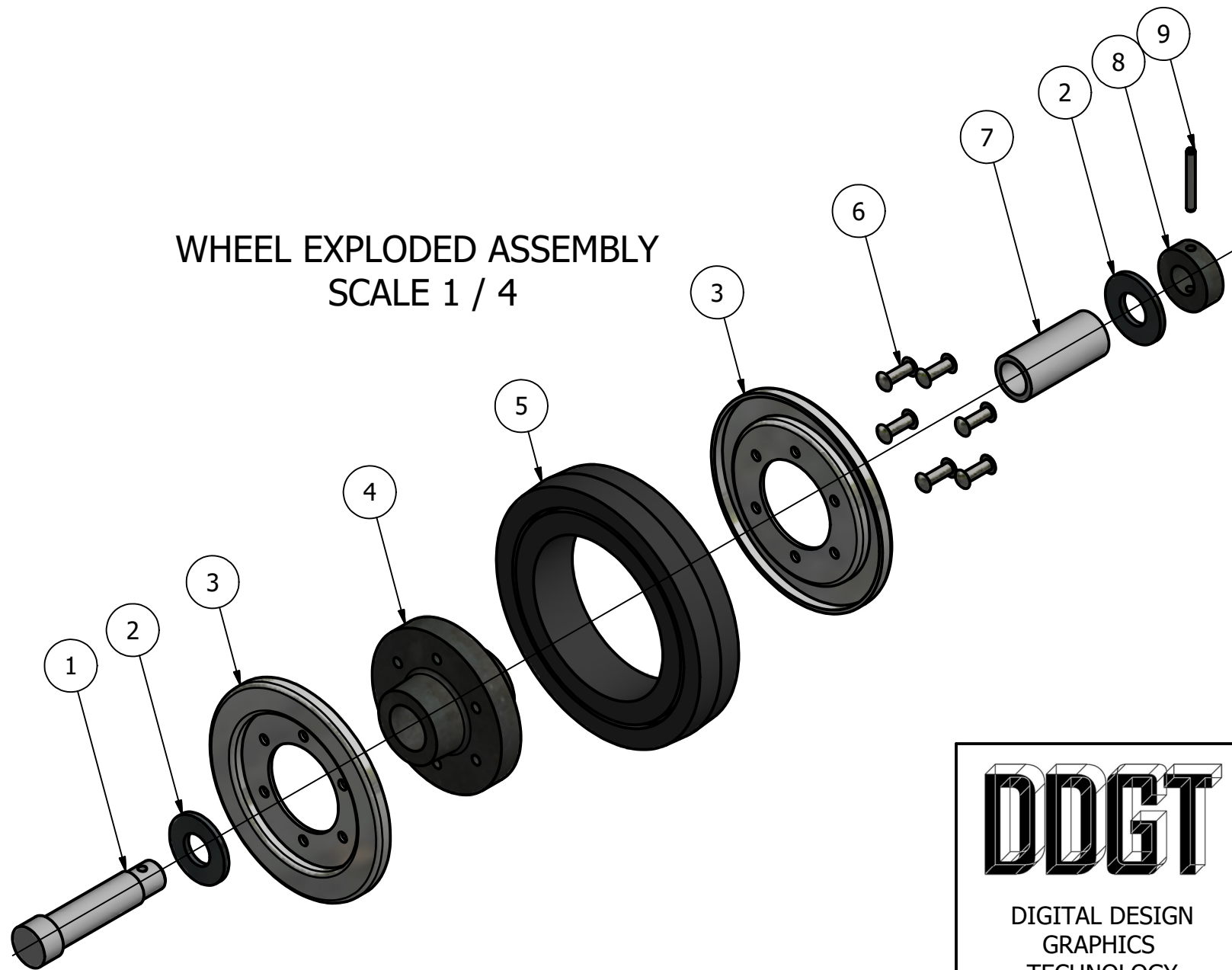


**LEGEND:**

- ∅ DIAMETER
- R RADIUS
- ° DEGREES

PARTS LIST				
ITEM	QTY	PART NUMBER	MATERIAL	DESCRIPTION
1	1	AXLE	STEEL	
2	2	WASHER	ALUMINUM-POLISHED	.18 THICKNESS
3	2	SIDE PLATE	STEEL	.12 UNIFORM THICKNESS
4	1	HUB	STEEL	
5	1	WHEEL	RUBBER, SILICONE	
6	6	RIVET	STEEL	.31 X 99
7	1	BUSHING	IRON CAST	
8	1	WHEEL LOCK	ALUMINUM	
9	1	SPRING PIN	STEEL-MILD	Pin - Slotted Spring

WHEEL EXPLODED ASSEMBLY  
SCALE 1 / 4

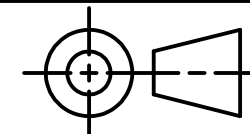


WHEEL ASSEMBLY  
SCALE 1 / 2



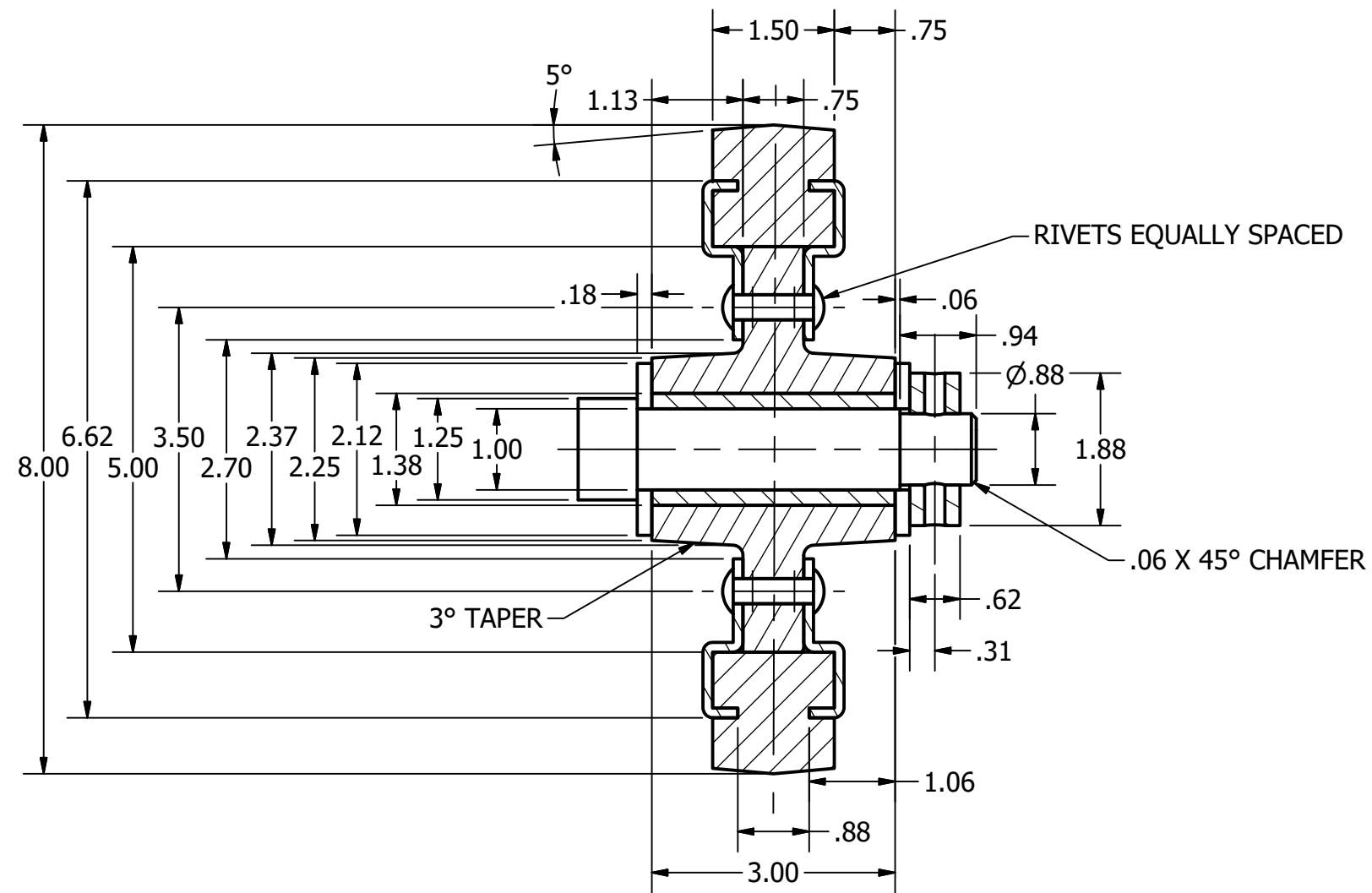
DIGITAL DESIGN  
GRAPHICS  
TECHNOLOGY

WWW.DDGT.NET



TOLERANCES UNLESS SPECIFIED:  
 DECIMAL INCHES  
 X = ±.020  
 XX = ±.010  
 XXX = ±.005  
 FRACTIONAL ±1/64"  
 ANGLE ±1 DEGREE  
 SURFACES <sup>32</sup> ✓

COURSE:	DDGT121
INVENTOR DRAWING NAME	WHEEL ASSEMBLY
FIG #:	11-55
DRAFTER:	W. VALLADARES
DATE:	5/12/2019
SCALE:	1:2
PAGE #:	1 OF 2



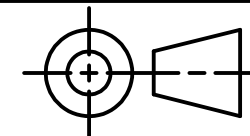
PARTS LIST		
ITEM	QTY	PART NUMBER
1	1	AXLE
2	2	WASHER
3	2	SIDE PLATE
4	1	HUB
5	1	WHEEL
6	6	RIVET
7	1	BUSHING
8	1	WHEEL LOCK
9	1	SPRING PIN

**LEGEND:**  
 Ø DIAMETER  
 R RADIUS  
 ° DEGREES



DIGITAL DESIGN  
 GRAPHICS  
 TECHNOLOGY

WWW.DDGT.NET



TOLERANCES UNLESS SPECIFIED:  
 DECIMAL INCHES  
 X = ±.020  
 XX = ±.010  
 XXX = ±.005  
 FRACTIONAL ±1/64"  
 ANGLE ±1 DEGREE  
 SURFACES <sup>32</sup> ✓

COURSE: DDGT121

INVENTOR DRAWING NAME  
 WHEEL ASSEMBLY

FIG #: 11-55

DRAFTER: W. VALLADARES

DATE: 5/12/2019

SCALE: 1:2

PAGE #: 2 OF 2